

ClarkeTM

FOLDING CREEPER

Model CMC50

Part Number 7630191

ASSEMBLY INSTRUCTIONS

Thank you for purchasing this CLARKE Folding Car Creeper.

Please read this leaflet thoroughly and follow the instructions carefully, in doing so you will ensure the safety of yourself and that of others around you, and you can look forward to the creeper giving you long and satisfactory service.

GUARANTEE

This CLARKE product is guaranteed against faulty manufacture for a period of 12 months from the date of purchase. Please keep your receipt as proof of purchase.

This guarantee is invalid if the product is found to have been abused or tampered with in any way, or not used for the purpose for which it was intended.

Faulty goods should be returned to their place of purchase, no product can be returned to us without prior permission.

This guarantee does not effect your statutory rights.

SAFETY PRECAUTIONS

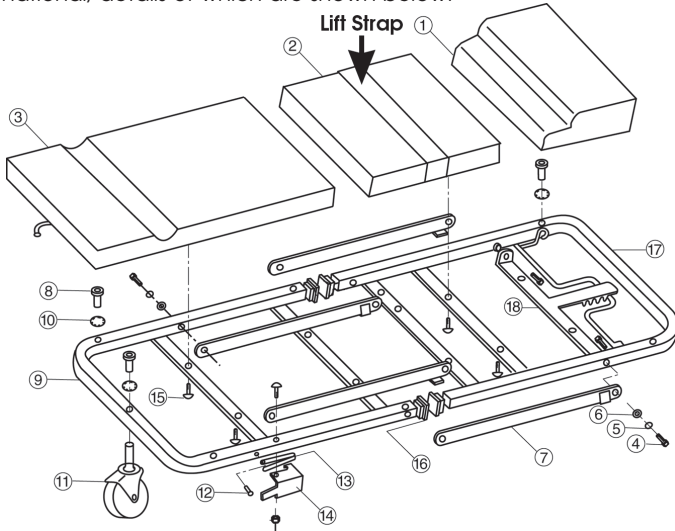
1. Take care ALWAYS when handling the creeper, not to get your hands or fingers caught between the frame and pivot arms, particularly when raising or lowering the seat.
2. ALWAYS lift and move the creeper using the LIFT STRAP.
3. NEVER allow the creeper to be used as a plaything. Keep children away at all times...this is NOT a toy.
4. Never leave the creeper unattended. When not in use, it should be stored carefully and not left lying around for others to trip over. Be aware that this could be a serious hazard.
5. Always use your creeper on a hard level surface, not in the vicinity of drains, holes, curbs, cracks etc., as this could cause serious damage to the castors.
6. ALWAYS check your creeper regularly for signs of damage, and if any is apparent, have it repaired before putting back into use. Remember, broken, worn or missing parts could result in injury.

ASSEMBLY

Should damage, to any of the components, have occurred during transit, please notify your Clarke dealer immediately.

1. Slip the lockwasher (10) on to the barrel nut (8) and inset into the pre-drilled holes in the frame, from the top.
2. From the bottom, insert the castor into the barrel nut and tighten by hand as far as possible.
3. Using the Hex. wrench supplied, in the hex recess in the barrel nut...tighten all 7 Nuts.

The Creeper is maintenance free, but should any damage occur, spare parts are available from Clarke International, details of which are shown below.



Item Description	Part No.	Item Description	Part No.
1 Adjustable Headrest	CMS5001	10 Lockwasher	CMS5010
2 Middle Cushion	CMS5002	11 2 1/2" Castor	CMS5011
3 Bottom Cushion	CMS5003	12 Rivet	CMS5012
4 M8x25 Screw	CMS5004	13 Spring	CMS5013
5 Flat Washer	CMS5005	14 Latch	CMS5014
6 Lockwasher	CMS5006	15 M6x16 Bolt	CMS5015
7 Support Bar	CMS5007	16 Plastic End Cap	CMS5016
8 Barrel Nut	CMS5008	17 Frame B	CMS5017
9 Frame A	CMS5009	18 Headrest Hinge Bar	CMS5018

For Spare Parts, please contact your nearest dealer, or CLARKE International, on one of the following numbers.

TEL: 020 8988 7400

FAX: 020 8558 3622

or e-mail as follows:

PARTS: Parts@clarkeinternational.com